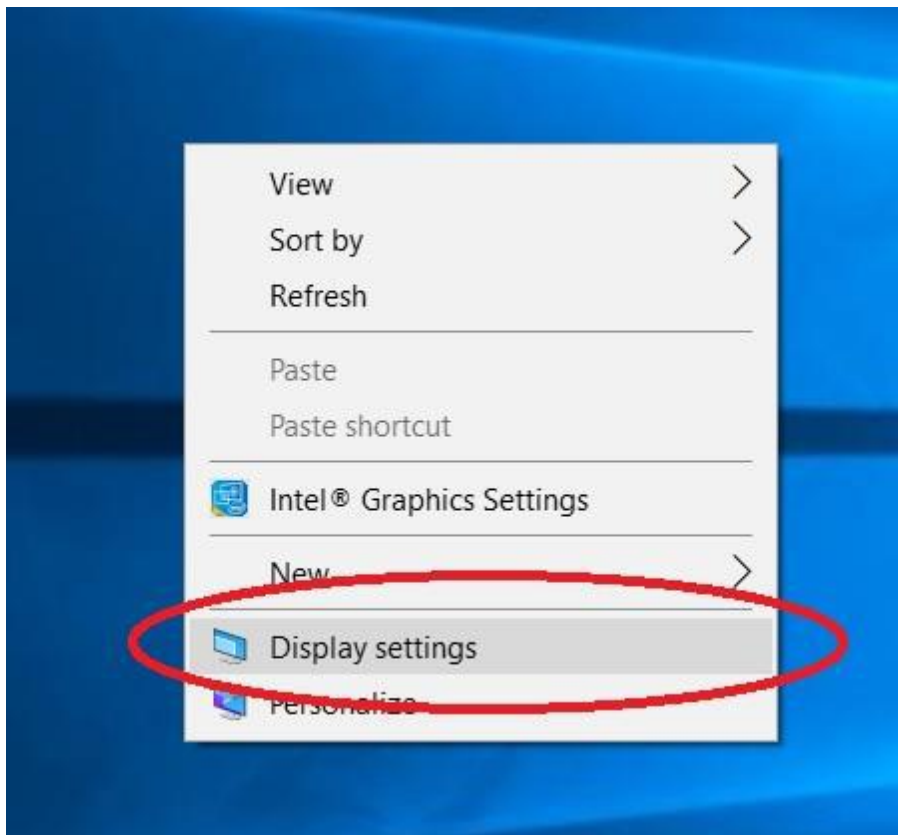


Note: If your monitor is black make sure there is power to your monitor and it is turned on. If both your monitor and Miix screens are black, turn on your projector. The system thinks your monitor is your primary monitor. Your Miix's screen must be the primary one. See step 2.

1. Open the keyboard on your Miix so you can see its screen. **Right click your mouse button on a blank area of your screen.** A dialog box will appear like the one below. **Click on Display Settings.**



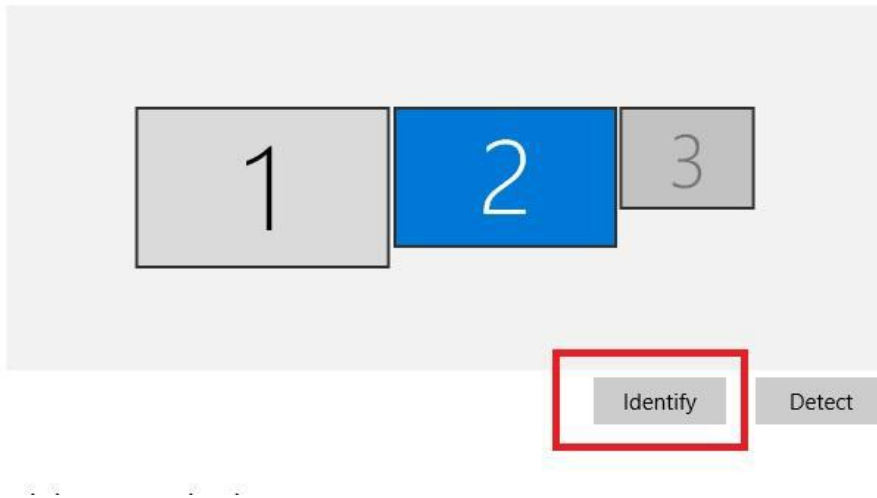
2. If you see three screens like in the picture below, click on Identify. Notice the number displayed on your Lenovo Miix, and continue to step b.

a.

## Display

### Select and rearrange displays

Select a display below to change its settings. Some settings are applied to all displays.

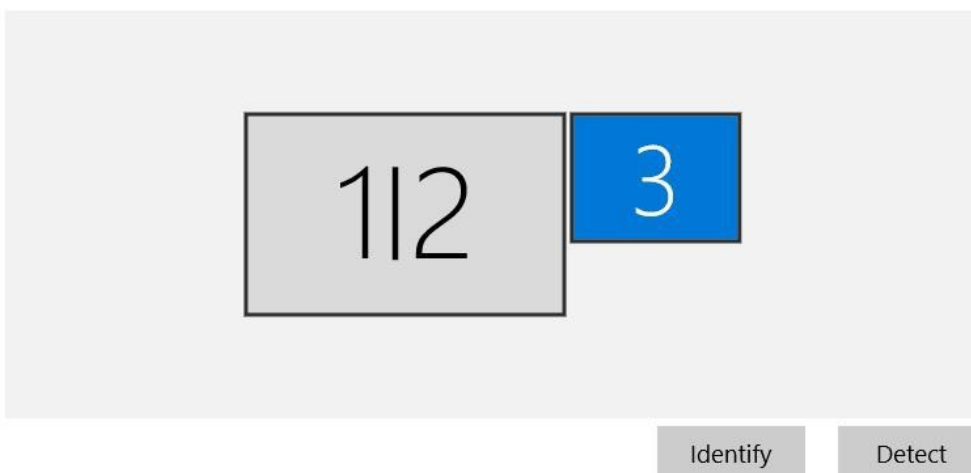


**If your "Display" looks like the one below, continue to step f.**

## Display

### Select and rearrange displays

Select a display below to change its settings. Some settings are applied to all displays.

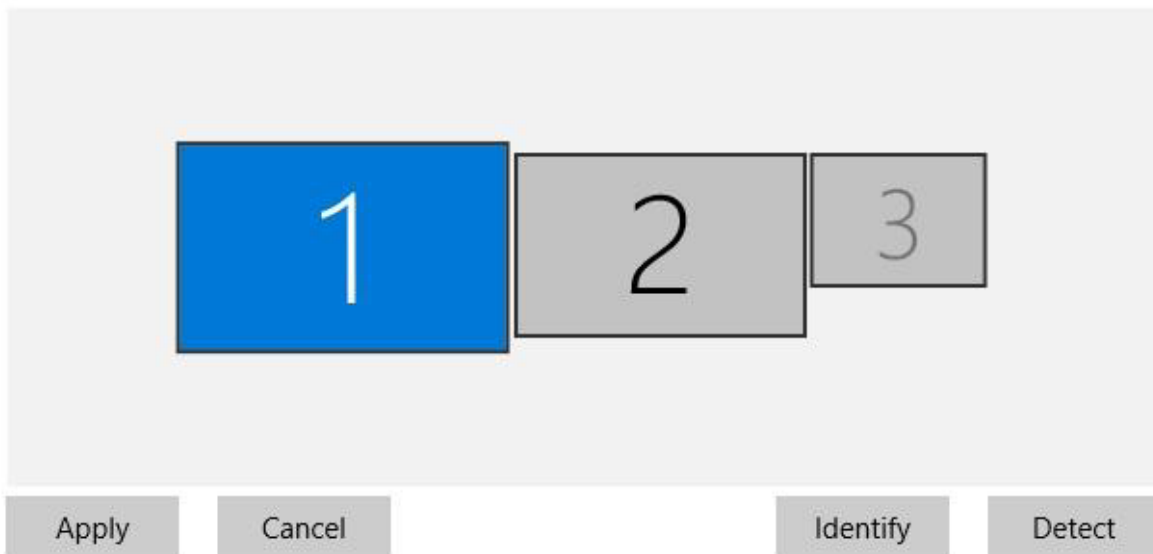


b. Notice the numbers which will appear on the screen of your Miix and monitor. If a number **1** appears on your Miix Screen, click on the box with a 1 inside it under Display. If your Miix displays **2** click on the box with 2 inside it. Make sure your identified Miix box is blue.

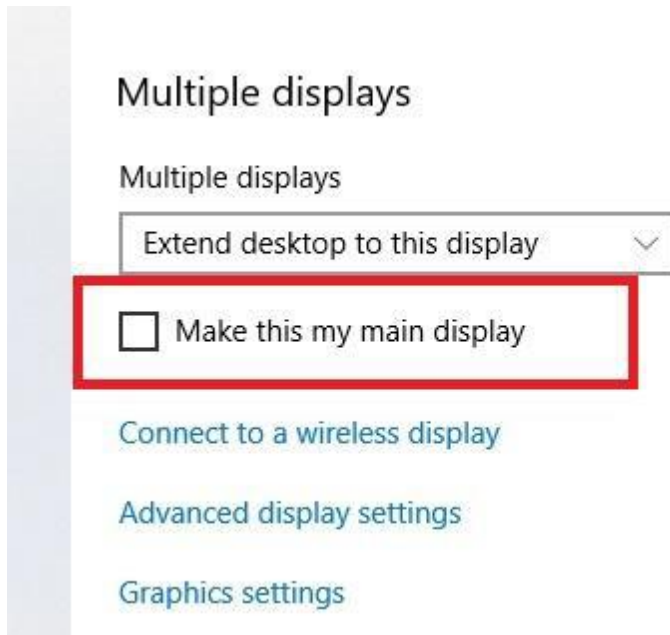
## Display

### Select and rearrange displays

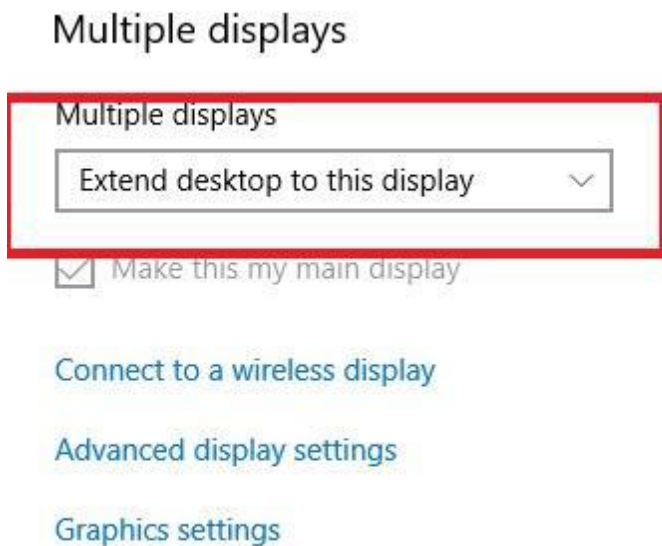
Select a display below to change its settings. Some settings are applied to all displays.



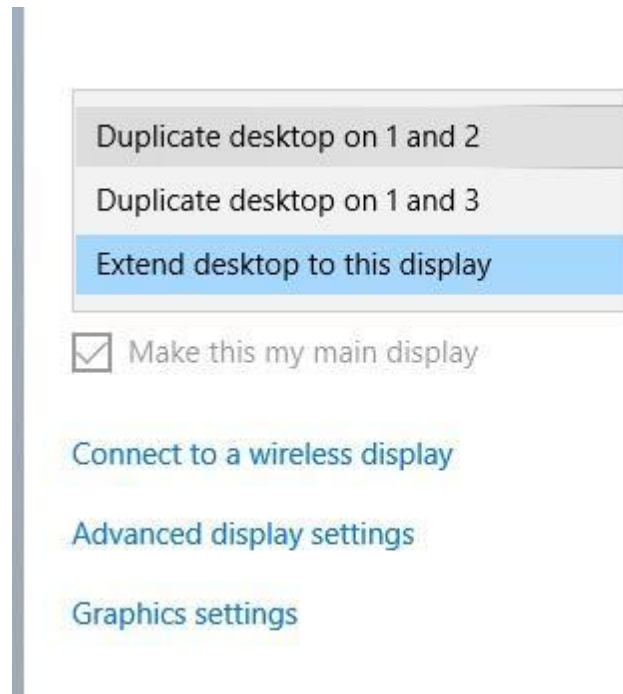
c. Scroll down until you see “Multiple displays”. Click in the box beside “Make this my main display”. All of your icons should show up on your Miix.



d. Next click on the drop down box “Extend desktop to display”.



e. When you click the button identify, if your Miix was listed as 1 and your monitor was listed as 2, click “Duplicate desktop on 1 and 2”. Otherwise click “Duplicate desktop on 1 and 3”. Click the X in the upper right corner of the screen to close out of the “Display Settings” dialog box. You should now see icons on both your Miix and Monitor.

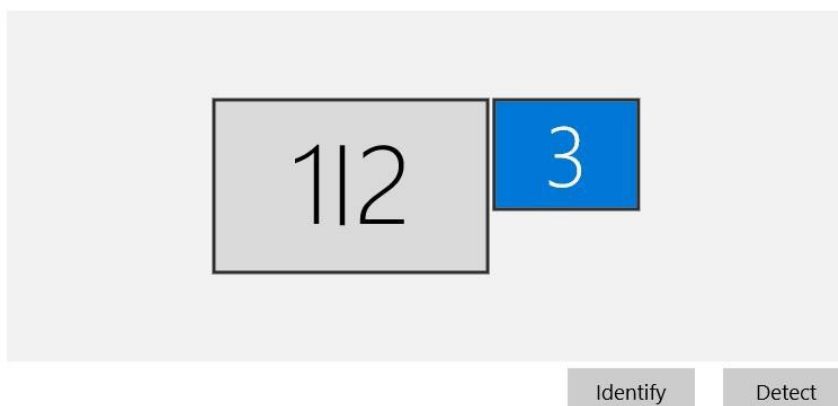


f. Your Display should look like the one below.

## Display

Select and rearrange displays

Select a display below to change its settings. Some settings are applied to all displays.



g. Click on the box 3 so that it will turn blue. Scroll down to “Multiple Display”. Make sure the display box has “Extend desktop to this display”. If not click on the drop down box and select “Extend desktop to this display”. Click on the “X” in the upper right corner of your screen to close the dialog box.

## Multiple displays

Multiple displays

Extend desktop to this display ▼

Make this my main display

[Connect to a wireless display](#)

[Advanced display settings](#)

[Graphics settings](#)

You may now close the dialog box and return to your desktop